

CCTV Solutions

EIT is at the forefront of the supply and installation of innovative security solutions, with a focus on making a difference through product performance. We offer a variety of security solutions to fit your budget and overall security requirements, whether that is a simple analogue solution or a fully integrated IP CCTV solution, which can seamlessly integrate with access control, global door entry systems or even be fully integrated with EPOS equipment to provide surveillance to prevent fraud in the retail sector.

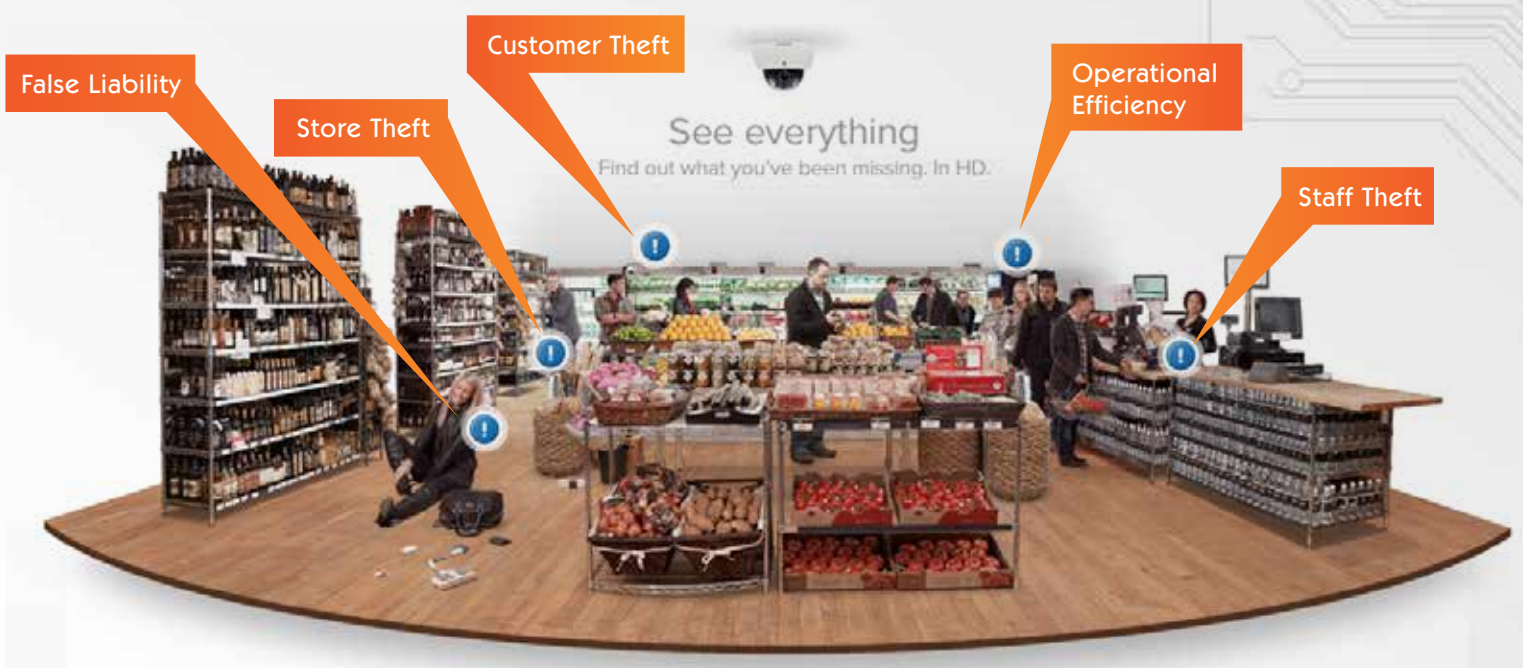
How can EIT help you prevent theft in Retail?

EIT has implemented solutions which are proven to be the most effective means of eliminating internal fraud. **According to the Centre for Retail Research, the UK has the second highest level of employee theft in Europe, and theft or fraud may be costing your business thousands of pounds every year.** Implementing an innovative POS Integration, is a complete solution for both new and existing CCTV installations as this technology gives you total control and peace of mind. With POS Integration you can now view the most important part of your business from any location. This revolutionary POS solution allows you to capture transaction data from your Point of Sale equipment, displaying it on both live-view and playback. Smartphone and Web browser viewing will enable you to stay connected to your business from wherever you are.

The Benefits:

- Internal Fraud Detection
- Monitoring of all transactions
- Evidence of "transactions errors"
- Observe Voids / No Sales
- Eliminate short-changing
- Remotely and locally monitor all POS transactions 24/7 in real time
- Reduction in Cash Back fraud
- Identify "Friends & Family" EPOS fraud

"The research – commissioned by Axis Communications and carried out by the Centre for Retail Research – found that of the 261 responses from UK retailers encompassing over 20,300 stores, 85% of them directly attributed the reduction in internal and external shrinkage to the use of CCTV monitoring. Over a third of those saw reductions in losses of between 11% and 50%."





IP based security solutions offer incredible advantages over the rapidly declining coax based analogue systems of the past, but that does not mean to say that the analogue systems do not still have a place, as even analogue technology might be the correct fit for the environment at the right price. The technology of today can even utilise coax and convert to IP if needed, which will enhance picture quality of older systems.

The emerging IP technology however, is only successful if implemented as part of a well-designed cabling solution and Ethernet based network. This is EIT's heritage, and places us uniquely as the obvious and most capable partner for integrators wishing to take advantage of the growth opportunities offered by this type of solution.

Whether you are a high street retailer, warehouse environment or health club, your ultimate requirements for implementing CCTV will be the same.

- Clear picture quality
- Quick and efficient method to find an incident on the recorded footage
- Preventing theft or damage to your property / equipment or stock
- Capturing a true account of events
- Providing CCTV images of a quality to be used for evidence with the authorities
- Integration options for door entry systems, global solutions or EPOS
- Ability to view footage or live images on mobile devices

Working with EIT to provide security solutions for your business takes away the pain from finding the right solution. There are so many providers in this sector it's hard to know which ones to use and trust. EIT have the skills and the team, and are approved installers of security equipment. We have been installing these approved installers of high quality, professional security equipment solutions for many years into a variety of industries including schools, hospitals, major high street retailers and large warehouses, which means we have the experience to find the right solution that will make a difference to your business, whatever the need.

In order for EIT to provide our customers with the best proposition, we partner with a variety of suppliers and manufacturers, who are competitive and trusted. We provide the right solution for your business backed by great support packages. We have worked with these companies time and time again, each of them offering different specialities which fit with virtually any security requirement. But it is our job to locate the solution for you, and then, of course to implement it.

Every client and every project is unique - we have the skills and knowledge to recognise what your system needs to reach its full potential and meet those unique requirements.



European Information Technology Ltd
 Unit 24, Mulberry Court, Bourne Industrial
 Park, Bourne Road, Crayford, Kent DA1 4BF

Tel: 01322 524 765
www.euroit.co.uk